



HUMAN RESOURCES CONSULTANTS  
INVESTIGATIONS

# ***On-Demand ENVIRONMENTAL Learning Library Catalog***

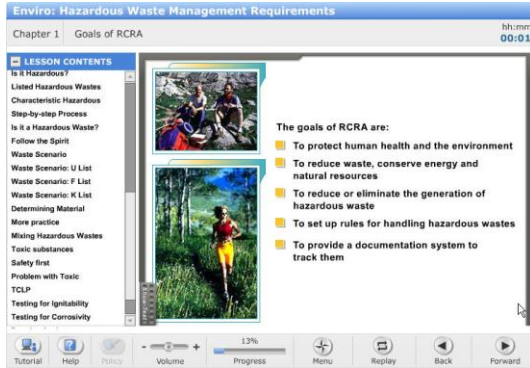
*Click on the course title or scroll down to see each course description.*

**To register, please contact Michelle Spitzer at P•A•S Associates  
(661) 631-2165 [Michelle@PASassociates.com](mailto:Michelle@PASassociates.com)**

Enviro: Hazardous Waste Management Requirements .....	2
Enviro: Pollution Prevention Program Guidelines .....	3
Enviro: Process Safety Management Procedures .....	4
Enviro: Storm Water Pollution Prevention Procedures .....	5
Enviro: US Environmental Regulation Guidelines.....	6

# **Enviro: Hazardous Waste Management Requirements**

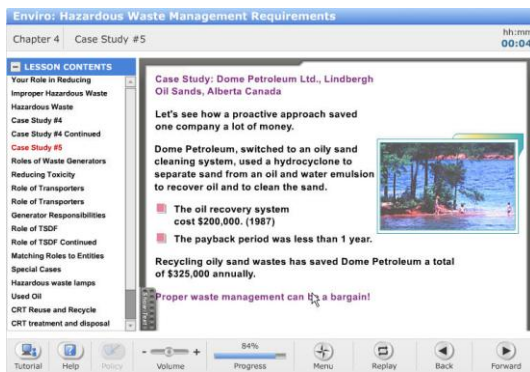
This course gives employees the background necessary to recognize when they have a hazardous waste problem. This course introduces employees to the Resource Conservation and Recovery Act (RCRA) and the Pollution Prevention Act of 1990, which govern waste management. This course will give employees the background to manage hazardous waste according to federal regulations. Employees will learn to recognize when they have a regulated hazardous waste. After successfully completing the course, employees will be able to summarize the steps for properly managing hazardous waste including generation, transportation, treatment, storage, and disposal.



## **Objectives:**

- Recognize a hazardous waste
- Define ignitable, corrosive, reactive and toxic wastes
- Be familiar with the types of wastes that appear on the K, F, U, P, and D lists
- Summarize the purpose of and procedure for standard waste determination tests: the TCLP, Flash Point testing, determination of pH
- Define three generator stat uses: LQG, SQG, CESQG and know that the three categories have differing responsibilities under the regulations
- Summarize the steps for properly managing hazardous waste from "cradle-to-grave," including generation, transportation, treatment, storage, and disposal
- State the main idea of the pollution prevention philosophy
- Describe the purpose of the PBT list of high-priority wastes
- State the main elements of several other regulations that are related to RCRA
- Know your role in reducing risk from waste
- Describe recent developments in waste management: fluorescent lamps, CRT's
- Know where to obtain assistance with waste disposal questions

**Audience:** This course is for all employees who are involved in the generation and management of hazardous waste.



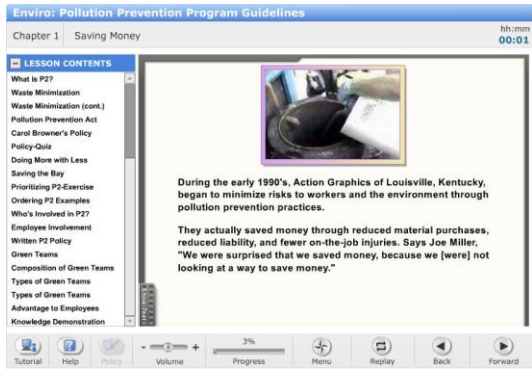
**Primary Regulations:** RCRA (1976, amended 1984); Pollution Prevention Act of 1990

**Related Regulations:** The Clean Air Act (CAA), 42 CFR 85 IV-A (1970); The Clean Water Act (CWA), 33 CFR 26 (1977); The Safe Drinking Water Act (SDWA), 42 CFR 6A XII Part A Sec. 300f. (1974); The Toxic Substances Control Act (TSCA), 15 CFR 53 (1976); Comprehensive Environmental Response, Compensation, and Liability Act (CERCLA or Superfund) 42 CFR 103 (1980); Federal Insecticide, Fungicide and Rodenticide Act (FIFRA), 7 CFR 6 (1972); The Emergency Planning & Community Right-To-Know Act (EPCRA) 42 CFR 116

**Duration:** 60-90 minutes

# **Enviro: Pollution Prevention Program Guidelines**

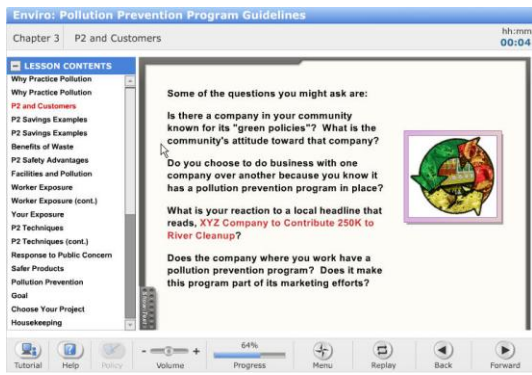
This course presents an overview of pollution prevention. By defining pollution, the causes of pollution, and pollution preventatives, this course instructs employees in general industry of the key elements to pollution prevention.



## **Objectives:**

- Define pollution prevention.
- Identify the key participants in a pollution prevention program.
- Identify the regulatory requirements related to pollution prevention.
- Identify different classes of waste generators.
- Identify different pollution prevention methods.
- Understand the steps in pollution prevention practice.

**Audience:** Pollution Prevention is a U.S. Federal policy. Every employer and employee needs to be familiar with this topic.



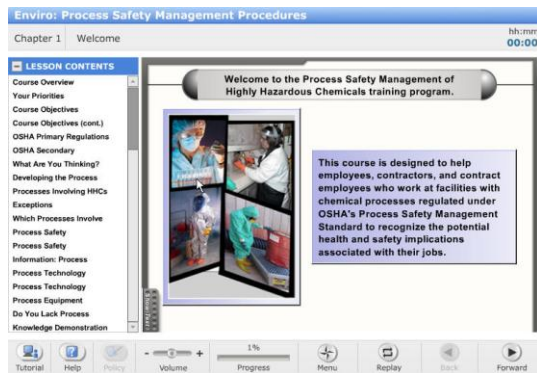
**Primary Regulations:** The Pollution Prevention Act of 1990

**Related Regulations:** None

**Duration:** 60-90 minutes

## **Enviro: Process Safety Management Procedures**

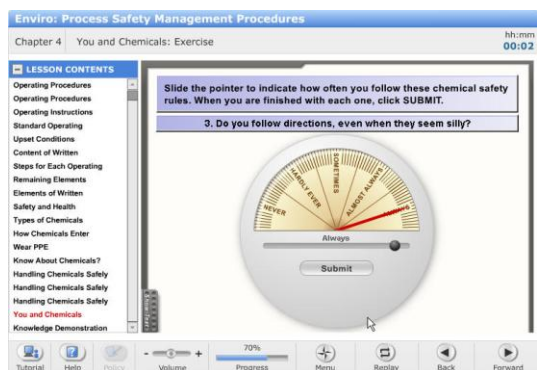
This course is designed to help employees, contractors, and contract employees who work at industrial process plants to recognize the potential health and safety implications associated with their jobs. This course is intended to educate the trainee in order to help prevent or minimize the consequences of a catastrophic release of toxic, reactive, flammable, or explosive Highly Hazardous Chemicals (HHC) from a process.



### **Objectives:**

- Identify the parts of a definition of a process involving HHCs.
- Identify workplace chemical and process hazards, equipment used in the processes, and technology used in the processes.
- Describe the steps in performing a workplace hazard assessment, including, as appropriate, identification of potential sources of accidental releases, identification of any previous release within the facility that had a potential for catastrophic consequences in the workplace, estimation of workplace effects of a range of releases, and estimation of the health and safety effects of such a range on employees.
- Describe the process of participation in the development of hazard assessments and chemical accident prevention plans and how to access these and other required records.
- Identify your role in responding to workplace hazard assessment findings, addressing prevention, mitigation, and emergency responses.
- Identify your role in periodical reviews of the workplace hazard assessment and response system.
- Describe the steps in developing and implementing written operating procedures for the chemical processes, including procedures for each operating phase, operating limitations, and safety and health considerations.
- Describe the steps in responding to emergencies.
- Identify the parts of a quality assurance program to ensure that initial process-related equipment, maintenance materials, and spare parts are fabricated and installed consistent with design specifications.
- Describe the steps in inspecting, testing, and maintaining critical process-related equipment to ensure ongoing mechanical integrity.
- Describe the steps in a pre-startup safety review of newly installed or modified equipment.
- Describe the steps in participating in investigating incidents resulting or having the potential to result in a major accident.

**Audience:** Personnel working in industrial process plants



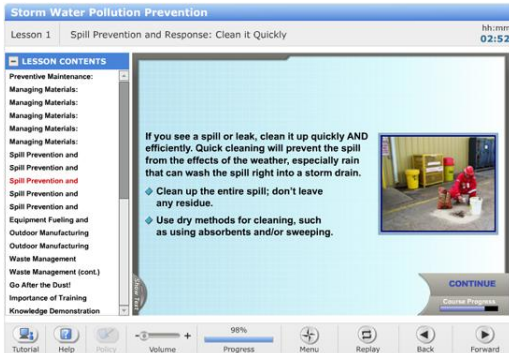
**Primary Regulations:** OSHA 29 CFR 1910.119, Process Safety Management of Highly Hazardous Chemicals. OSHA 29 CFR 1910.119, Appendix A, List of Highly Hazardous Chemicals, Toxics, and Reactives OSHA Directives CPL 2-2.45A CH-1. Process Safety Management of Highly Hazardous Chemicals – Compliance Guidelines and Enforcement Procedures (1994, September 13). CPL 2.94. OSHA Response to Significant Events of Potentially Catastrophic Consequences (1991, July 22).

**Related Regulations:** None

**Duration:** 60-90 minutes

## **Enviro: Storm Water Pollution Prevention Procedures**

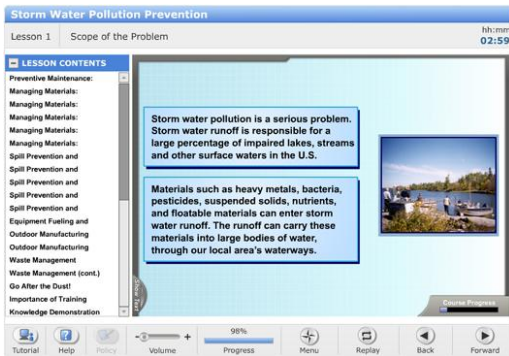
This course will increase learners' awareness of the problem of storm water pollution. It addresses the regulatory environment surrounding storm water pollution, and defines roles, responsibilities, and actions to prevent storm water pollution.



### **Objectives:**

- Define storm water pollution and recognize the negative impact of storm water pollution
- Identify regulatory background for storm water pollution prevention
- Recognize the importance of the Storm Water Pollution Prevention Plan (SW3P)
- Define Best Management Practices (BMPs), that when implemented will reduce storm water pollution
- Recognize basic BMPs

**Audience:** This course is for all employees who are involved in the generation and management of industrial materials and wastes.



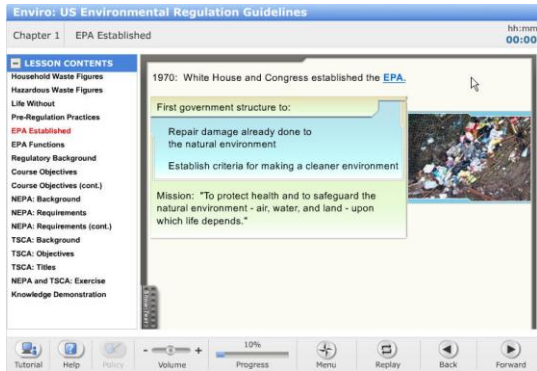
**Primary Regulations:** The Clean Water Act (CWA)

**Related Regulations:** None

**Duration:** 50-60 minutes

# **Enviro: US Environmental Regulation Guidelines**

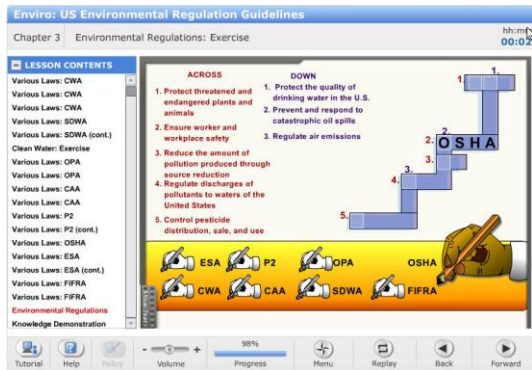
This course presents the history, purpose, and mission of key regulatory agencies including OSHA, EPA, and DOT. The intent of the course is to provide the learner with an understanding of the sources of regulatory occupational safety and health work practices and standards.



## **Objectives:**

- Define the purpose of The Toxic Substances Control Act (TSCA)
- Identify the specific standards written that outline requirements to comply with TSCA
- Specify the purpose of The Resource Conservation and Recovery Act (RCRA)
- Identify the specific standards written that outline requirements to comply with RCRA
- Specify the purpose of The Comprehensive Environmental Response, Compensation, and Liability Act (CERCLA) also known as Superfund
- Identify the specific standards written that outline requirements to comply with CERCLA
- Specify the purpose of The National Environmental Policy Act (NEPA)|Identify the specific standards written that outline requirements to comply with NEPA

**Audience:** Managers and supervisors of industry.



**Primary Regulations:** 40 CFR, Protection of the Environment

**Related Regulations:** None

**Duration:** 45-60 minutes